



Tenant name: נילי 40 אחוזים
Site name: קניון מול הים

Issue date: 27/11/18
 Current meter reading: 21/11/18
 Previous meter reading: 22/10/18

Dear customer, here is the billing report for the period of 22/10/18 - 21/11/18:

ג - 00020411 - 3

Rate type	Consumption type	Previous reading	Current reading	Total consumption in Kwh	Price per 1 Kwh in Agorot	Total to pay
Bill details for dates:		22/10/18	21/11/18			
777	Pisga	67,138.10	67,406.29	268.19	46.96	125.94 NIS
778	Geva	42,319.59	42,406.16	86.57	39.12	33.87 NIS
779	Shefel	34,275.39	34,513.51	238.13	32.52	77.44 NIS

ג - 00025155 - 7

Rate type	Consumption type	Previous reading	Current reading	Total consumption in Kwh	Price per 1 Kwh in Agorot	Total to pay
Bill details for dates:		22/10/18	21/11/18			
777	Pisga	89,227.01	90,326.65	1,099.63	46.96	516.39 NIS
778	Geva	60,562.66	60,928.72	366.07	39.12	143.21 NIS
779	Shefel	110,898.51	111,479.60	581.08	32.52	188.97 NIS

Total per tenant:

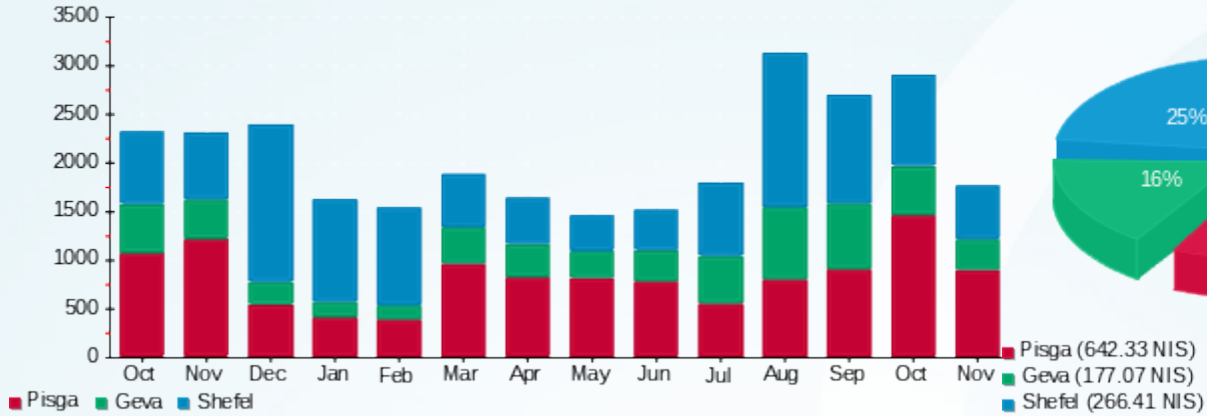
	Pisga	Geva	Shefel	Total	Max demand
Total consumption	1,367.82	452.64	819.21	2,639.67	13.14
Total to pay	642.33 NIS	177.07 NIS	266.41 NIS	1,085.81 NIS	

	Fixed payment	188.00 NIS
	Power factor	0.840
	Power factor addition	86.54 NIS
Doesn't include VAT	Total to pay	1,360.35 NIS

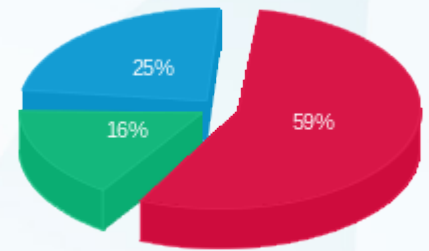




History of consumption in Kwh



Charges in NIS based on seasons



■ Pisga (642.33 NIS)
■ Geva (177.07 NIS)
■ Shefel (266.41 NIS)

